

LEND and Learn TA Series

Implementation Science

Monday, March 25, 2024

3:00 PM-4:00 PM ET



INTERDISCIPLINARY TECHNICAL ASSISTANCE CENTER
ON AUTISM AND DEVELOPMENTAL DISABILITIES

- Ensure your name is displayed correctly in the participant list. You may also include the program name and state and preferred pronouns.
 - Example: Jackie Czyzia, AUCD, she/her
 - Hover over your name in the “Participants” box and select “More” → “Rename”
- Remain muted unless speaking
- State your name prior to speaking
- Zoom Captioning is available
- Recording is only available for attendees and upon request
- Use the chat box to introduce yourself!
 - Name, Role, Program
 - If you had an extra hour in your day, how would you spend it?



LEND and Learn TA Series

- 4th Monday of the month at 3 PM ET
 - May change due to availability of LEND program and/or holidays
- Opportunity for LEND leadership and faculty to discuss priority TA topics and to learn from each other
- Led by a different LEND program each month (15-minute presentation, followed by open conversation)



Save the Dates

Inclusive Post-Secondary Education

Monday, April 22 at 3 PM ET

Susanna Miller-Raines, MSW

*Institute for Community Inclusion, University of Massachusetts Boston
Think College*

Opportunities for higher education for students with intellectual disability, also known as inclusive postsecondary education (IPSE), have increased in the last decade or more since revisions to the Higher Education Opportunity Act in 2008. More recently LENDs have started fostering relationships with programs, students and alumni. Mrs. Miller-Raines will share a national overview of IPSE, how to collaborate with existing programs, and how to be a leader in developing programs and services that support higher education for people with intellectual disability. As LENDs have also been charged with having trainees and faculty with disabilities, partnering with programs could begin a natural pipeline for trainees and faculty



Dr. Jessica Suhrheinrich
San Diego State University

Dr. Lauren Brookman-Fraze
UC San Diego

Implementation Science & LEND Curriculum

San Diego LEND

Lauren Brookman-Frazee, Ph.D. (UC San Diego)

Jessica Suhrheinrich, Ph.D. (SDSU)

March 26, 2024

UC San Diego
Altman Clinical and Translational
Research Institute

SDSU | San Diego State
University

Rady
Children's
Hospital
San Diego

The logo for Rady Children's Hospital San Diego features the text "Rady Children's Hospital San Diego" in a blue serif font. To the right of the text is a stylized graphic of a child's head and shoulders, composed of several teal-colored triangles of varying sizes and orientations, arranged to suggest a profile.



Implementation Research

“... the scientific study of methods to promote the systematic uptake of research findings and other evidence-based practices into routine practice, and, hence, to improve the quality and effectiveness of health services.”

- (Eccles/Mittman, 2006)



Key Implementation Science Concepts



THE THING: the intervention/innovation/practice



EFFECTIVENESS RESEARCH: looks at whether THE THING works



IMPLEMENTATION RESEARCH: looks at how best to help people/places do THE THING



IMPLEMENTATION STRATEGIES: the stuff we do to try to help people/places do THE THING



IMPLEMENTATION OUTCOMES: how much and how well they do THE THING

Integrating Key Implementation Science Concepts



THE THING: the intervention/



EFFECTIVENESS RESEARCH: looks



IMPLEMENTATION RESEARCH: looks at



IMPLEMENTATION STRATEGIES: the



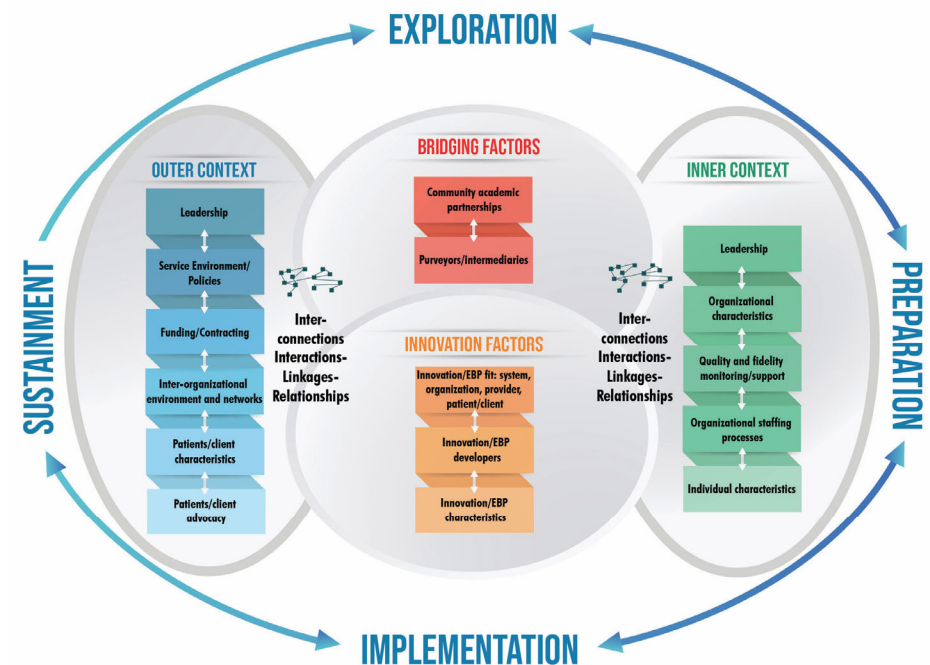
IMPLEMENTATION OUTCOMES: how

- Leadership and Autism/DD Seminar Series
- Implementation Leadership Workshop
- Community Action Projects
- Autism Research and Practice CME monthly seminar
- Dissemination/Implementation Science (DISC Seminar)

Why Implementation Frameworks?

“Map” of what, where, when, and how implementation occurs (or doesn't)

1. Evidence-based practice – “The thing”
2. Multi-level Implementation Contexts - Outer & Inner
3. Phases of implementation (exploration, preparation, implementation, sustainment)
4. Barriers and facilitators to implementation



Applying Implementation Science Constructs

	Outer Context	Inner Context	EBP “The Thing”
1	Early Intervention Services in rural community	Community Based Organization delivering Speech/OT/Behavior services	Parent-mediated naturalistic developmental behavioral intervention
2	Pediatric Primary Care Services	Federally Qualified Health Center serving low resource families	Screening measure for mental health needs in autistic youth
3	Adult mental health services	Community mental health clinic	Cognitive Behavioral Intervention for Anxiety

1. *What are the potential **barriers** to implementation?*
 1. *Outer Context?*
 2. *Inner Context?*
2. *What are the potential **strategies** you use to facilitate implementation of the EBP in the service context?*

Dissemination and Implementation Science Center (DISC)

Consultations

Seminars

Workshops

UC SAN DIEGO ACTRI DISC MEMBERSHIP SIGN UP TO BE A DISC MEMBER TODAY!

The UC San Diego ACTRI DISC offers two membership categories: **DISC General Member** and **DISC Investigator**. These membership categories represent the individual's preferred level of engagement in DISC services and activities based on their D&I research skills and interests. Both categories are free to join and receive the DISC's core benefits. Individuals from all disciplines and training backgrounds (undergraduate students through senior researchers or practitioners) are welcome to join. Completion of an annual evaluation survey is required for both categories.

DISC GENERAL MEMBERSHIP

Requirements

- Completion of an annual evaluation survey.

Benefits

Access to UC San Diego ACTRI DISC services and activities including:

- Training and education events (e.g., advanced D&I workshops, pre-grant submission reviews)
- Consultation requests about D&I grant proposals, manuscripts and projects
- Eligibility to apply for annual D&I pilot grant funding (for UCSD or UCSD partners).
- Eligibility to apply for annual D&I conference funds
- D&I mentoring program
- Assistance with dissemination of D&I publications, research and clinical achievements and resources through DISC website and social media platforms.



DISC INVESTIGATOR MEMBERSHIP

Requirements

- Completion of an annual evaluation survey.
- Contribute to at least two DISC events/services per year. These can include:
 - Review 2-5 proposals (~2-3 pages each) to participate in the DISC pre-submission grant reviews program (offered twice per year).
 - Review 2-5 DISC pilot grant proposals using NIH scoring criteria.
 - Serve as a D&I mentor in the DISC mentoring program.
 - Present at a DISC Event (Annual Proposal Bootcamp, Annual Advanced D&I Methods Workshops, Implementation Science Seminar Series, D&I Journal Club and Works in Progress).
 - Provide a guest lecture in the annual Dissemination and Implementation Science in Health (DISH, FPM 291) course.
 - Serve as an ad-hoc consultant for the DISC Consultation Service.
 - Lead or serve as key personnel on a grant proposal that is submitted through the UC San Diego DISC.

Benefits

Priority access to UC San Diego DISC services and activities including:

- Listed as "DISC Investigator" on DISC Website and Biosketch.
- DISC Letter of Support provided for inclusion in D&I grant proposals.
- Early registration to attend training and education events (e.g., advanced D&I workshops, pre-grant submission reviews). Priority consultation requests about D&I grant proposals, manuscripts and projects.
- Eligibility to apply for annual D&I pilot grant funding (for UCSD or UCSD partners).
- Eligibility to apply for annual D&I conference funds. D&I mentoring program.
- Assistance with dissemination of D&I publications, research and clinical achievements and resources through DISC website and social media platforms.

UC San Diego
ACTRI Dissemination and Implementation Science Center

SIGN UP at
<https://bit.ly/DISCMember>



Contact us at
disc@health.ucsd.edu
@ImpSciUCSD

Implementation Science and Team Effectiveness in Practice (IN STEP) Children's Mental Health Research Center

Pilot Projects

Consultations

Mock Grant Reviews

Seminars

IN STEP Center

People

Center Projects

Pilot Projects

Tools and Resources

Services and Activities

Community Service
System Workgroups

Consultation

Mock NIH Grant
Application Review

Get Involved with IN STEP Children's Mental Health Research Center!

Contact Us

Phone: 858-966-6245, ext. 243912

Email: instep@health.ucsd.edu

Follow Us

Twitter: [@UCSDALACRITY](https://twitter.com/UCSDALACRITY)

YouTube: [IN STEP Center](#)

Opportunities

[Post Doctoral Announcement 2023](#)

Subscribe to IN STEP Center Communications

instep@health.ucsd.edu

Thank You!

*Please share feedback on today's sessions and ideas for
future LEND and Learn sessions*



<https://www.surveymonkey.com/r/MarchLENDandLearn>

Full Team Email: itac@aucd.org